

ZHS-0601 IRCUT

ISO/TS16949 ISO9000 ISO14000
RoHS REACH CE UL VDE TÜV

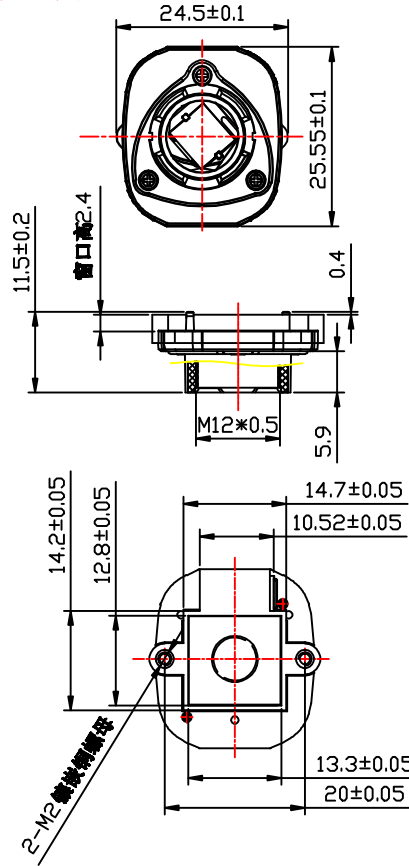


总重量 Total Weight: 17g
应用范围: CMOS和CCD摄像机
APPLICATION: The Door IP Intercom

综合特性
GENERAL FEATURES

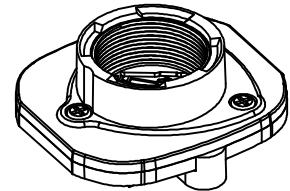
1. 驱动类型: 励磁式
Motor Type: Magnet moving
2. 工作电压: DC 3.3-12V
Work Voltage : DC 3.3-12V
3. 工作环境温度:
温度: -30 ~ 80℃
湿度: 0 ~ 90%
Operating environment:
Temp: -30 ~ 80℃
Relative humidity: 0 ~ 90%
4. 滤光片切换响应时间: 50ms
Fluid medium: Air, volati
5. 寿命: 典型值为10万次 (on 0.1s, off 3s)
Lify cycle: 1,000, 00 cycles (on 0.1s, off 3s)
6. 绝缘等级: B类
Insulation class: class B
7. 安装CCD和CMOS芯片的窗口高度 2.4和孔距20, 也可按客户要求定做。

类型: 抽屜式

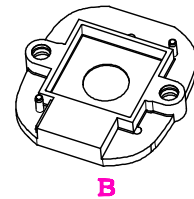
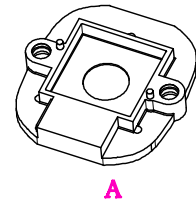


单位:mm Units:mm

轴测图

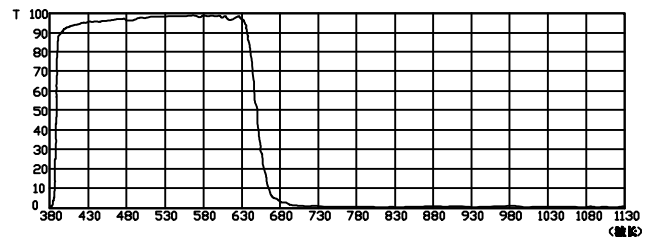


两种定位结构



镜片光谱图

1. IR Filter spectrum :



2. AR Filter spectrum :

