

## ZHS-0406 IRCUT

ISO/TS16949 ISO9000 ISO14000  
RoHS REACH CE UL VDE TÜV



总重量 Total Weight: 14g  
应用范围: CMOS和CCD摄像机  
APPLICATION: The Door IP Intercom

### 综合特性

#### GENERAL FEATURES

1. 驱动类型: 励磁式

Motor Type: Magnet moving

2. 工作电压: DC 3.3-12V

Work Voltage : DC 3.3-12V

3. 工作环境温度:

温度: -30 ~ 80℃

湿度: 0 ~ 90%

Operating environment:

Temp: -30 ~ 80℃

Relative humidity: 0 ~ 90%

4. 滤光片切换响应时间: 50ms

Fluid medium: Air, volati

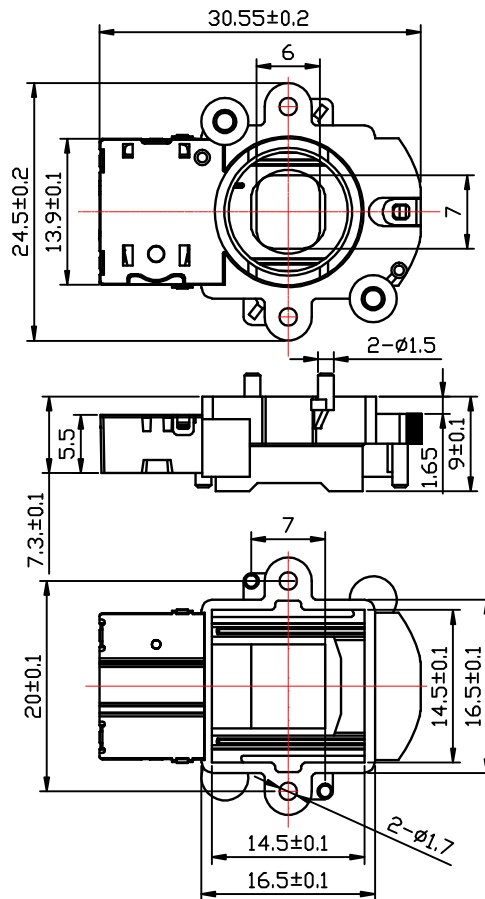
5. 寿命: 典型值为10万次 (on 0.1s, off 3s)

Lify cycle: 1,000, 00 cycles (on 0.1s, off 3s)

6. 绝缘等级: B类

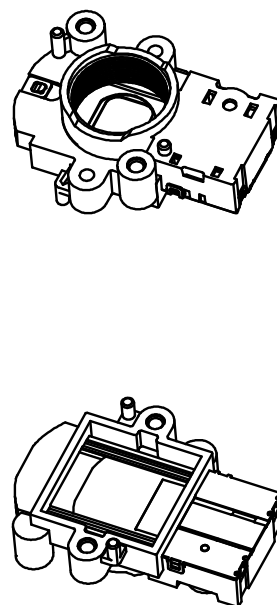
Insulation class: class B

### 类型: 抽屜式



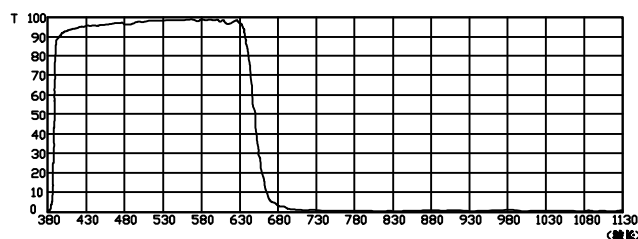
单位:mm Units:mm

### 精测图



### 镜片光谱图

#### 1. IR Filter spectrum :



#### 2. AR Filter spectrum :

